

36CH 960P/25CH 1080P 4HDD

Model : NR-N6000-36EF

- P2P cloud service, including cloud connecting, cloud monitoring, cloud transmitting to access IPC and NVR at any time and any place
- Support Onvif protocol, support High profile S, High profile G, compatible with different IP camera that based on Onvif, RTSP standard
- Support megapixel HD network video preview, storage and playback;
- Support search, playback and backup by event;
- Support all channel image display on one screen at same time, support 4 channels' image display by mainstream, and 4 channels playback;
- Support monitor PTZ on preview mode
- Offer CMS for free

Front Panel :



Rear Panel :

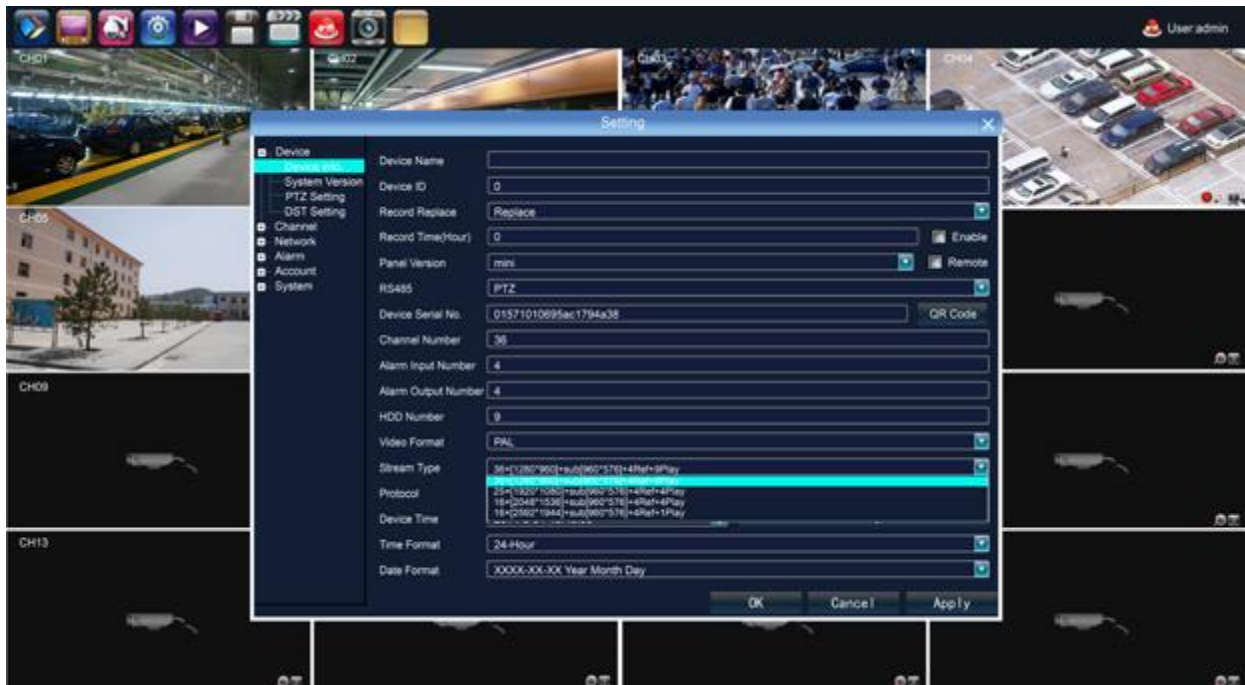


Key Features :

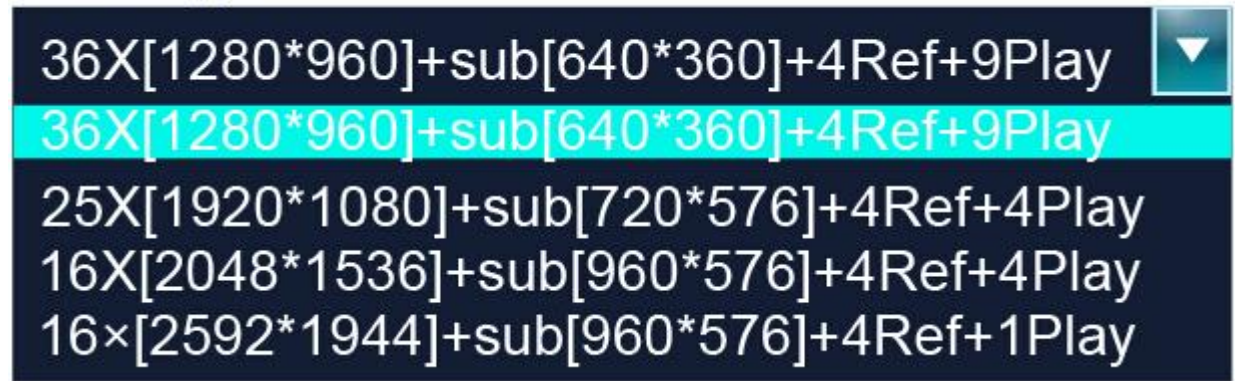
- P2P cloud service, including cloud connecting, cloud monitoring, cloud transmitting to access IPC and NVR at any time and any place
- Support Onvif protocol, support High profile S, High profile G, compatible with different IP camera that based on Onvif, RTSP standard



- Support megapixel HD network video preview, storage and playback;
- Support search, playback and backup by event;
- Support all channel image display on one screen at same time, support 4 channels' image display by mainstream, and 4 channels playback;
- Support monitor PTZ on preview mode
- Offer CMS for free



Stream Type



36X[1280*960]+sub[640*360]+4Ref+9Play

36X[1280*960]+sub[640*360]+4Ref+9Play

25X[1920*1080]+sub[720*576]+4Ref+4Play

16X[2048*1536]+sub[960*576]+4Ref+4Play

16x[2592*1944]+sub[960*576]+4Ref+1Play

Main Functions:

1. Preview channel can be switched to other channel randomly without changing the MAC which is convenient for the project construction;
2. The dendritic menu can be moved. Man-machine communication is more direct and the settings of parameters are more easy and convenient;
3. The mouse roller can realize 15X digital zooming which the enlarged image can be dragged and moved randomly under preview and playback modes;
4. Immediate snapshot and immediate view; the picture will be stored in an independent area in the HDD;
5. The recording playback is shown by time bar and different color represents different recording type. It is very fast and easy to find check the recording;
6. Recording backup can be accurate to second. Any time period of backup is available;
7. The recording files in the USB disk can play directly in the playback interface while the snapshot pictures can be viewed directly;
8. With 3G, WIFI wireless connection functions;
9. Standard resolution which can be adjusted according to the display device in order to get the best image quality;
10. Adopt HDD sequence writing method and the data is written from 0 track which increase 2.5X lifetime of the HDD

Model Number	NR-N6000-36EF	
Operating System	Embedded LINUX operating system	
Image Code Control	Image code quality adjustable, variable bitstream and constant bitstream optional	
Dual Stream	Each channel can set main stream and sub stream	
Video Standard	1080P(1920×1080)30fps / 960P(1280×960)30ftp/720P(1280×720)30fps	
Monitoring Image Quality	1080P(1920×1080) / 960P(1280×960)/720P(1280×720)	
Image Motion Detection	Each screen can set multiple detection areas and set 6-level sensitivity	
Recording Playback Quality	Any 9ch 960P/720P playback, 4ch 1080P/3MP/5MP playback simultaneously	
Region Cover	Every channel can set 4 cover regions (IPC Support)	
Recording Mode	Support manual , auto, dynamic detection, alarm trigger record mode	
Backup Way	Support U disk, USB mobile HDD, USB DVD-RW, network storage and backup (Partly needs IPC Support)	
Operation Way	Mouse, Keyboard	
Local Login	Username and password	
Recording Storage	Local HDD, network	
External Ports	Video Input	①36×(1280*960)+sub[640*360]+4Ref.+9Play 36ch 1.3MP IP Camera
		②25×(1920*1080)+sub[720*576]+4Ref.+4Play 25ch 2.0MP IP Camera
		③16×(2048*1536)+sub[960*576]+4Ref.+4Play 16ch 3.0MP IP Camera
		④16×(2592*1944)+sub[960*576]+4Ref.+1Play 16ch 5.0MP IP Camera
	Audio Input	36/25ch network audio input
	Video Output	1ch VGA+1ch HDMI
	Audio Output	1ch RCA output
	Network Port	1 RJ45,10M/100M/1000M self-adaptive LAN port
	RS485 Port	Full duplex standard 485 port
	USB Port	1USB 3.0 port, 2 USB 2.0 ports
Alarm Input	4ch	
Alarm Output	1ch	
Wireless Port	WIFI	
HDD	HDD Port	4 SATA+1 E-SATA HDD ports
	MAX Capacity	Each port supports MAX 4TB HDD
Mobile Surveillance	Support(iPhone, Windows Mobile, BlackBerry, Symbian, Android) smart phone	
Power Supply	12V6A	
Power Consumption	≤25W (without HDD)	
Working Temperature	-10℃~ +55℃	
Working Humidity	10%-90%	
Dimension	Equipment: 440×360×70mm, Packing: 460mm×135mm×560mm	
Weight(without HDD)	N.W.: 5.7Kg; with packing: 6.9Kg	
Outside Carton	4pcs/carton. 480mm×560×575mm; weight: 30Kg	
Installation Way	Desktop Installation	

