

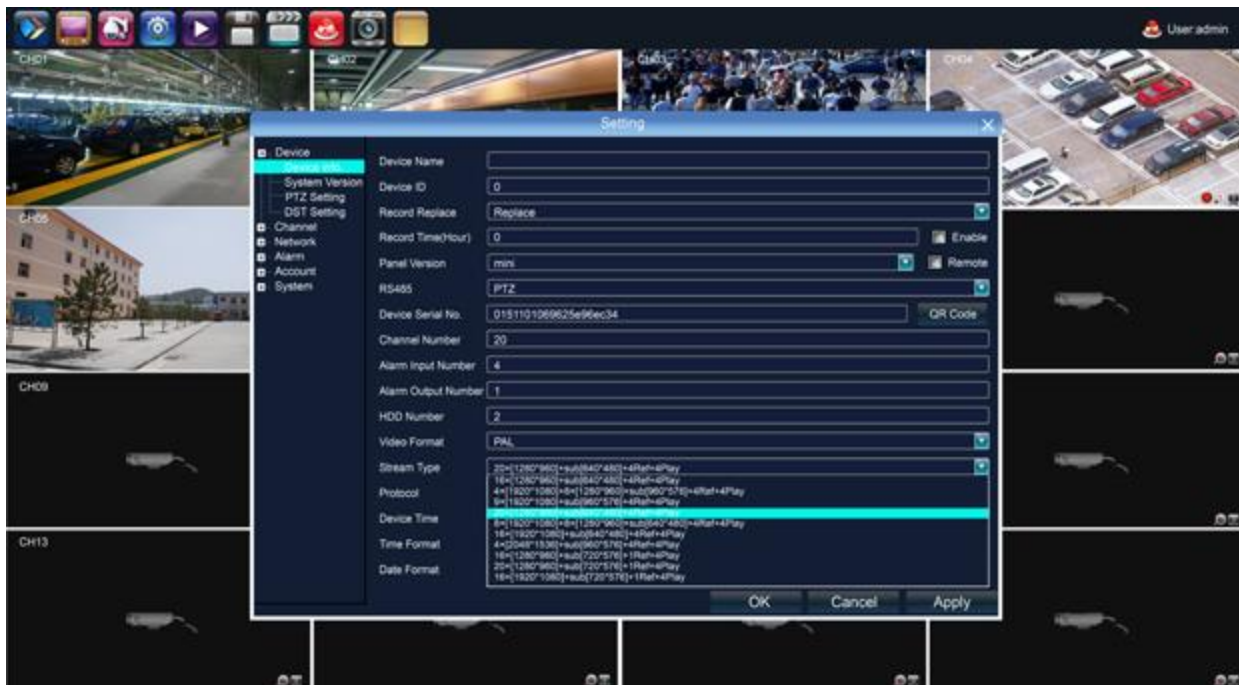
25CH 960P/16CH 1080P 4HDD



Key Features :

- P2P cloud service, including cloud connecting, cloud monitoring, cloud transmitting to access IPC and NVR at any time and any place
- Support Onvif protocol, support High profile S, High profile G, compatible with different IP camera that based on Onvif, RTSP standard
- Support megapixel HD network video preview, storage and playback;
- Support search, playback and backup by event;
- Support all channel image display on one screen at same time, support 4 channels' image display by mainstream, and 4 channels playback;
- Support monitor PTZ on preview mode
- Offer CMS for free

25CH 960P/16CH 1080P 4HDD



Front Panel :



Rear Panel :



25CH 960P/16CH 1080P 4HDD

Model Number	NR-N6000-25EF	
Operating System	Embedded LINUX operating system	
Image Code Control	Image code quality adjustable, variable bitstream and constant bitstream optional	
Dual Stream	Each channel can set main stream and sub stream	
Video Standard	1080P(1920×1080)30fps/ 960P(1280×960)/720P(1280×720)30fps	
Monitoring Image Quality	1080P(1920×1080) / 960P(1280×960)/720P(1280×720)	
Image Motion Detection	Each screen can set multiple detection areas and set 6-level sensitivity	
Recording Playback Quality	9ch 960P/720P playback, 4ch 1080P/3MP/5MP playback	
Region Cover	Every channel can set 4 cover regions (IPC Support)	
Recording Mode	Support manual , auto, dynamic detection, alarm trigger record mode(Partly needs IPC Support)	
Backup Way	Support U disk, USB mobile HDD, USB DVD-RW. network storage and backup	
Operation Way	Mouse, remote control, front panel	
Local Login	User name and password	
Recording Storage	Local HDD, network	
External Ports	Video Input	① 25×(1280*960)+sub[720*576]+4Ref.+9Play 25ch 1.3MP IP Camera
		② 16×1920*1080)+sub[720*576]+4Ref.+4Play 16ch 2.0MP IP Camera
		③ 8×(2048*1536)+sub[960*576]+4Ref.+4Play 8ch 3.0MP IP Camera
		④ 4×(2592*1944)+sub[960*576]+4Ref.+4Play 4ch 5.0MP IP Camera
	Audio Input	25/16ch network audio input
	Video Output	1ch VGA+1ch HDMI
	Audio Output	1ch RCA output
	Network Port	1 RJ45,10M/100M/1000M self-adaptive LAN port
	RS485 Port	Full duplex standard 485 port
	USB Port	1 USB 3.0 port, 2 USB 2.0 ports
Alarm Input	4ch	
Alarm Output	1ch	
Wireless Port	3G , WIFI	
HDD	HDD Port	4 SATA HDD Port
	MAX Capacity	Each port supports MAX 4TB HDD
Mobile Surveillance	Support(iPhone, Windows Mobile, BlackBerry, Symbian, Android) smart phone	
Power Supply	12V6A	
Power Consumption	≤25W (without HDD)	
Working Temperature	-10°C ~ + 55°C	
Working Humidity	10%-90%	
Dimension	Equipment : 440mm×360mm×70mm , Packing : 460mm×135mm×560mm	
Weight(without HDD)	N.W. : 5.7Kg ; With packing : 6.9Kg	
Outside Carton	4 pcs/carton. 480mm×560mm×575mm ; Weight : 30 Kg	
Installation Way	Desktop Installation	

25CH 960P/16CH 1080P 4HDD